

NEW High-Clearance AutoPump® AP4.5 Ultra

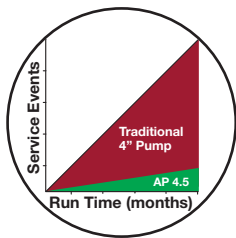
Low-maintenance, high-performance pump
runs for months in wells
where traditional pumps fail in days

The new AutoPump® AP4.5 Ultra (Patent Pending) delivers superior performance, running many times longer between service events. A pump installed for field testing needed just 30 minutes to clean after 220,000 minutes (348,965 cycles!) of uninterrupted run time – in a well that had been out of compliance for the previous 3 years, requiring pump cleaning every 3 to 5 days.

With a larger diameter and three times the clearance between the float, casing and discharge tube, the AP4.5 Ultra achieves the same flow rate as the standard AP4 with fewer cycles. This results in less wear per gallon pumped, extending equipment life cycle. Greater clearance also enables the pump to deal with high viscosities, solids content and precipitates in the pumped fluid.

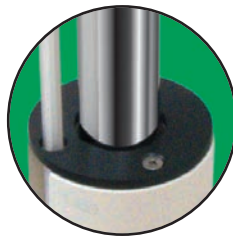
Proprietary non-stick finishes combine with the higher-clearance design to reduce solids buildup, increasing the interval between required service events even further. Pump cleaning is much faster and easier, often needing only a water spray and a light wipe. Metallic parts are all 316 grade Stainless Steel, resisting corrosion by the harshest leachates and highest temperatures.

**ULTRA 4.5 Clearance is
3 times greater than
traditional
pumps**



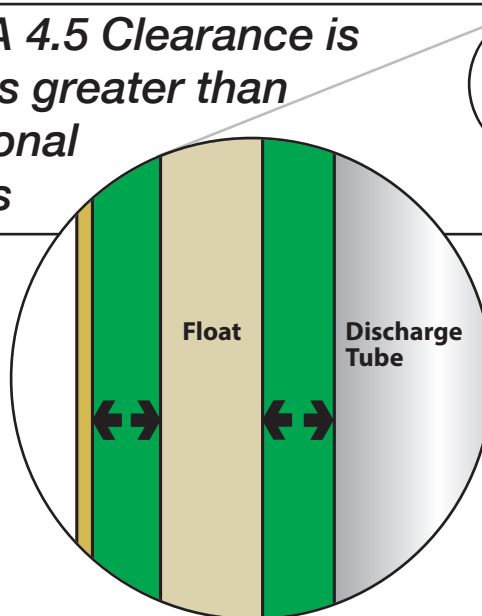
Site Maintenance Costs

Reduction in pulling pumps for service, “jump starting,” etc. frees technicians for other tasks



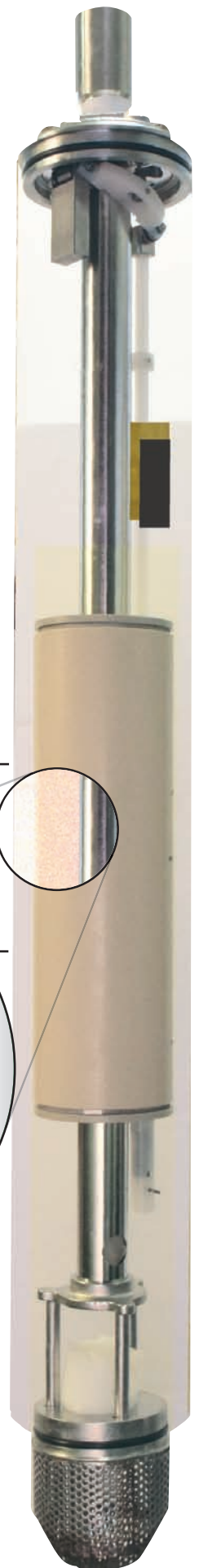
Extended Uptime

Proprietary finishes reduce buildup and extend the time between cleaning.



High-Clearance

Unique construction reduces wear on moving parts, resists clogging by solids, pumps longer without needing cleaning.



Innovative Environmental Products

(800) 624-2026 • www.qedenv.com

P.O. Box 3726 Ann Arbor, MI 48106-3726 USA • (734) 995-2547 • Fax (734) 995-1170 • info@qedenv.com

NEW High-Clearance AutoPump® AP4.5 Ultra

AutoPump® AP4.5 Ultra

Standard 4.5" Pump

| | |
|-------------------------------|--|
| Model | Short AP4.5 Ultra |
| Fluid Inlet | Bottom |
| Diameter | 4.562 in. (115.88 mm) OD |
| Weight | 17.8 lbs. (8.074 kg) |
| Length | 39.3 in. (101.1 cm) |
| Pump Volume Cycle | 0.45 - 0.55 gal (1.70 - 2.08 L) |
| Actuation Level | 26.7 in. (68 cm) |
| Maximum Flow | 13 gpm (49 Lpm) |
| Maximum Depth | 250 ft. (76 m) |
| Air Pressure | 5 - 120 psi (0.4 - 8.4 kg/cm ²) |
| Air Usage | 0.4 - 1.1 scf/gal. (3.0 - 8.5 liter of air/fluid liter) |
| Minimum Liquid Density | +0.7 SpG (0.7 g/cm ³) |

Standard Construction Materials

| | |
|----------------------|---|
| Pump Body | Fiberglass |
| Pump Ends | 316 Stainless Steel |
| Internal Components | 316 Stainless Steel, Viton, PVDF, Hastelloy-C |
| Tube & Hose Fittings | 316 Stainless Steel |
| Fitting Type | Barbs, Quick Connects or Easy Fittings |

Tube & Hose Options

| | |
|---------------------------------|---------------------------------------|
| Tubing Materials | Nylon |
| Sizes - Liquid Discharge | 1 in. (25 mm) or 1-1/4 in. (32 mm) OD |
| Pump Air Supply | 1/2 in. (13 mm) OD |
| Air Exhaust | 5/8 in. (16 mm) OD |
| Hose Material | Nitrile |
| Sizes - Liquid Discharge | 3/4 in. (19 mm) or 1 in. (25 mm) ID |
| Pump Air Supply | 3/8 in. (9.5 mm) ID |
| Air Exhaust | 1/2 in. (13 mm) ID |

All models are designed for severe conditions.



- **24/7 Live Support**
- **14 Local Support Offices**
- **East and West Coast Tech Centers**
- **Over 1,000 years of combined experience**
- **On-site installation assistance**
- **OSHA-certified service**
- **Largest inventory of quality pumps, parts, and accessories in the industry; ready for prompt shipment.**



Innovative Environmental Products